

## Emergency Management Unit

### Ontario Ministry of Health and Long-Term Care

Brian Schwartz MD, CCFP(EM), FCFP  
Scientific Advisor, Emergency Management Unit

1

## Did you know?...

- Ontario has 40% of Canada's population
- 50% of Canadian chemicals are manufactured in Ontario. Almost every major community has a hazardous facility located within its boundary
- There are 30 million shipments of hazardous products made in Canada per year (by land, sea and air). Every community in Ontario has hazardous products pass through it by road or rail
- Approximately 60% of the Canadian total road and rail accidents involving hazardous products occur in Ontario

2

## Did you know?... (cont'd)

- 40% of our power comes from nuclear generation. Ontario has the most nuclear generators in North America
- Ontario averages approximately 20 tornadoes per year. Other severe weather includes: thunderstorms, tropical depressions, blizzards and ice storms
- Earthquakes can and do occur in Ontario
- Ontario has 1500 - 2000 forest fires each year
- Floods are a common occurrence in a province with thousands of lakes and rivers

3

## What is an Emergency?

**“a situation or an impending situation that constitutes a danger of major proportions that could result in serious harm to persons or substantial damage to property and that is caused by the forces of nature, a disease or other health risk, an accident or an act whether intentional or otherwise; (“situation d’urgence”).”**

*(Emergency Management and Civil Protection Act, R.S.O. 1990)*

4

## Challenges:

- Information is usually limited
- Other factors can trigger 'emergency'

5

## Regulatory Framework in Ontario

- **Emergency Management and Civil Protection Act, 2006:**
  - Emergency powers to support management of a declared provincial emergency
  - Amend definition to include dangers caused by disease or health risk
  - Formalize use of orders (directives)
- **Order In Council responsibilities for MOHLTC under the *Emergency Management and Civil Protection Act*:**
  - Human Health, Disease and Epidemics
  - Health Services During an Emergency
- **Health Protection and Promotion Act**

6

## MOHLTC- Emergency Management Unit

### **Vision:**

To build and enhance a high performance system of integrated health emergency preparedness and response to keep Ontarians safe.


7

## MOHLTC- Emergency Management Unit

### **Mission:**

We will collaborate with stakeholders to develop, implement and maintain a comprehensive strategy to prepare for, respond to, and recover from health emergencies of known and unknown origin.

8



Emergency Plans	Emergency Operations Centre	Training	Exercises	Emergency Information	Public Awareness & Education
<ul style="list-style-type: none"> <li>-Business Continuity Plan</li> <li>-Ministry Emergency Response Plan</li> <li>-Ontario Health Plan for an Influenza Pandemic</li> <li>-Ontario Radiation Health Response Plan</li> <li>-Foreign Animal Disease Plan (health annex)</li> <li>-Mass Vaccination/Prophylaxis Plan</li> <li>-Smallpox Plan</li> </ul>	<ul style="list-style-type: none"> <li>-MEOC and alternate site established</li> <li>- Dedicated telecom-munications and I &amp; IT resources in place including video conference links with PHD, PHL and 80 healthcare sites</li> </ul>	<ul style="list-style-type: none"> <li>-"Virtual Team" trained</li> <li>-Training for health first responders, public health &amp; hospital staff to be provided under CBRN emergency preparedness program</li> <li>-Training of all EMU staff and selected divisional reps in BEM</li> <li>-Training of 3 EMU staff at Emergency Coordinator level</li> </ul>	<ul style="list-style-type: none"> <li>-FERMI II – Full activation of MEOC Windsor</li> <li>-EMAT, Niagara and Windsor</li> <li>-CBRN Regional Exercises</li> <li>-Pandemic Influenza Table Top Exercise(s)</li> <li>-Poultry Council Exercise</li> <li>- Ohio Exercise</li> <li>- Terrorist Event Simulation Exercise at Humber College</li> <li>-Toronto HUSAR Exercise</li> </ul>	<ul style="list-style-type: none"> <li>-Comprehensive range of communications and information resources:</li> <li>-Dedicated emergency intra and internet</li> <li>-Important Health Notice</li> <li>-24/7 Provider/ Public Health Hotlines</li> <li>-Telehealth Ontario</li> <li>-InfoLine</li> <li>-Envoy notification</li> </ul>	<ul style="list-style-type: none"> <li>-Emergency management resources on public internet site</li> <li>-Consultation with stakeholders in development of plans</li> <li>-Emergency readiness info. &amp; links</li> <li>-Employers Hotline</li> <li>-Extensive public speaking</li> </ul>

9

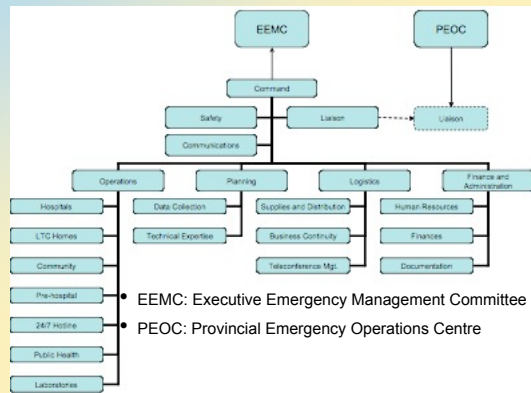
- ## Ministry Emergency Operations Centre (MEOC); In a health emergency:
- Central command centre from which emergency situations facing the healthcare system or emergencies requiring MOHLTC support will be coordinated.
  - Focal point where operational decisions for the healthcare system will be carried out in conjunction with the Provincial Emergency Operations Centre at Emergency Management Ontario and following strategic policy direction provided by the EEMC.
  - MEOC can be comprised of staff from across every MOHLTC division along with the additional external advisors and support staff necessary to fulfill the required elements of an effective ministry response.
- 10

- ## Ministry Emergency Operations Centre (MEOC)
- This staff complement may be adapted depending on the size, type or location of the emergency.
  - The MOHLTC has adopted the Incident Management System.
  - 
  - EMU has since added additional detail to the basic IMS structure to tailor it to healthcare emergencies and provide additional clarity regarding roles and responsibilities.
- 11

## Incident Management System

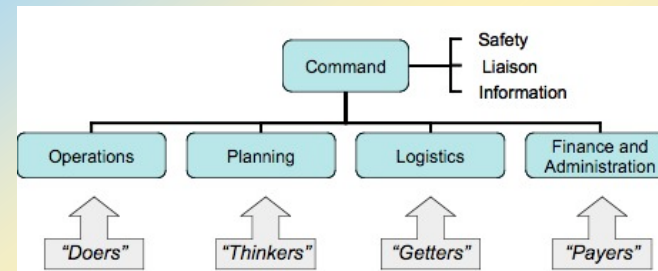
12

## The Incident Management System



13

## Incident Management System (IMS)



14

## Incident Management System (IMS)

- Internationally-recognized operational framework for emergency response
- Key features include:
  - Common terminology
  - Modular/scalable organization
  - Unity of command (single or unified command structure)
  - Management by objectives
  - Manageable span of control
  - Integrated communications
  - Consolidated action plans
  - Comprehensive resource management

15

## Ministry Emergency Operations Centre (MEOC)



16

## Ministry Emergency Operations Centre (MEOC)



17

## EMU: cont'd

- Should an incident escalate, EMU will become the coordinating body for the ministry's response, whether it be a 'public health' incident, a 'health incident' or another incident with 'health impacts'
- Coordination will occur from the Ministry Emergency Operations Centre (MEOC) under the leadership of:
  - PHD ADM and/or CMOH and/or EMU Director and/or other program areas
  - Lead role will depend on nature of incident

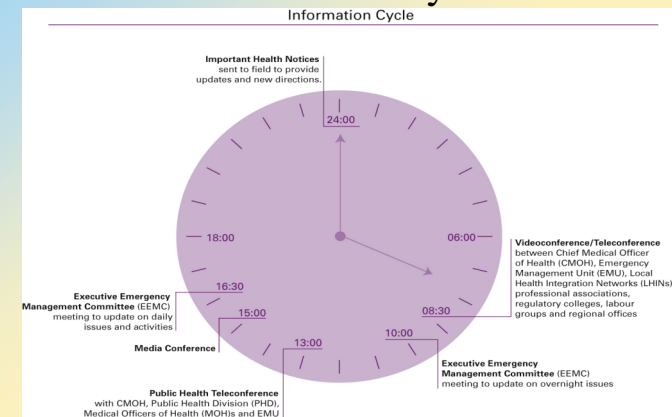
18

## In an infectious disease emergency (e.g. pandemic 'flu)

- Technical advice to the MOHLTC will be provided by the Scientific Response Team (SRT)
- SRT co-Chaired by EMU Scientific Advisor and Chair, Provincial Infectious Diseases Advisory Committee
  - Members include experts in ID, Public Health, Primary Care, Occupational Health and surveillance/epidemiology
  - Chairs report directly to Incident Manager & EEMC

19

## Information Cycle



20

## Contacts

Emergency Management Unit website:

[www.health.gov.on.ca/english/providers/emu/emu\\_mn.html](http://www.health.gov.on.ca/english/providers/emu/emu_mn.html)

Emergency Management Unit staff at:

1-866 212-2272 (health care providers' hotline)

1-866 331-0339 (24/7 employers' hotline)

[mohltc03@moh.gov.on.ca](mailto:mohltc03@moh.gov.on.ca) (e-mail)